



(425) 246-2970

## NAMIBIA

AH N1

FREE RANGE CONSERVANCIES / BUSHMANLAND /CAPRIVI

### Bushmanland

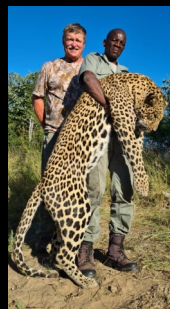


Trophy Hunts for  
**Hippo & Crocodile**  
\$11,500 / \$13,500

### • Cape Buffalo - \$14,900

*Includes: 7 Days (1x1)*

Hunter & Non-hunter  
Daily Rate & Trophy Fees



This Safari Company offers some of  
the Most Successful

### LEOPARD HUNTING

in Namibia

**\$28,500**

**Bushmanland:**

Hunts are 14 days

*Includes*  
Daily Rate & Trophy Fees

*Prices may be subject to change  
by the Safari Company*

To book you hunt contact: Skip Clemens • (425) 246-2970 Cell & Whatsapp

E: [adventuerhunts@gmail.com](mailto:adventuerhunts@gmail.com)





(425) 246-2970

# NAMIBIA

AH N1

FREE RANGE CONSERVANCIES / BUSHMANLAND /CAPRIVI

## Free Range Conservancies



*Note: Accommodations will vary by location, tent camps to lodges.*



**Daly Rate:** \$450 per day (1x1)

\$400 per day (2x1)

**Non-hunters** \$250 per day

### Trophy Fees: \$US

Baboon	\$100
Blesbuck (Common)	\$650
Caracal	\$1000
Damara Dik-Dik	\$2900
Duiker Grey (common)	\$450
Eland (Cape)	\$2500
Gemsbuck (Oryx) <40"	\$950
Gemsbuck (Oryx) >40"	\$1750
Giraffe	\$3250
Hyena – Brown	\$3500
Hyena – Spotted	\$2250
Impala	\$600
Impala (Black-faced)	\$2000
Jackal (Black-backed)	\$75
Klipspringer	\$2450
Kudu (Southern Greater)	\$3250
Lechwe, Red	\$3500
Nyala	\$2800
Ostrich	\$350
Red Hartebeest – Cape	\$950
Roan (Private Areas)	\$8850
Sable (Private Areas)	\$8850
Springbuck (Common) <14"	\$490
Springbuck (Common) >16"	\$1000
Steenbuck	\$500
Tsessebe	\$POR
Warthog	\$550
Waterbuck (Common)	\$1900
Wildebeest (Blue)	\$900
Wildebeest (Black)	\$1450
Zebra (Burchell's)	\$1250

*Prices may be subject to change by the Safari Company*

To book you hunt contact: Skip Clemens • (425) 246-2970 Cell & Whatsapp

E: [adventuerhunts@gmail.com](mailto:adventuerhunts@gmail.com)